




ANYTHING WORTH REDOING,
IS WORTH REDOING RIGHT.

RE-FRAC RIGHT WITH
NINE/MORHPACKER.



THE NINE/MORHPACKER
COMPLETION SOLUTION
GIVES YOU THE PRECISION
AND ECONOMY YOU WANT
WHEN YOU RESTIMULATE
YOUR WELLS.





At Nine Energy Service we never stop looking for ways to help you maximize your assets and increase production, and the Nine/MorphPacker technology is one of those powerful tools that really delivers. It offers you a quick, reliable and streamlined approach to re-stimulation of conventional and unconventional wells, enabling you to extend the life of your well.

Using breakthrough technology, the Nine/MorphPacker solution provides the most cost effective way to instantly isolate and refracture stages, reducing overall capital expenditure, personnel requirements, logistics costs and environmental footprint.

In short, the Nine/MorphPacker completion is re-fracing done right.

FEATURES

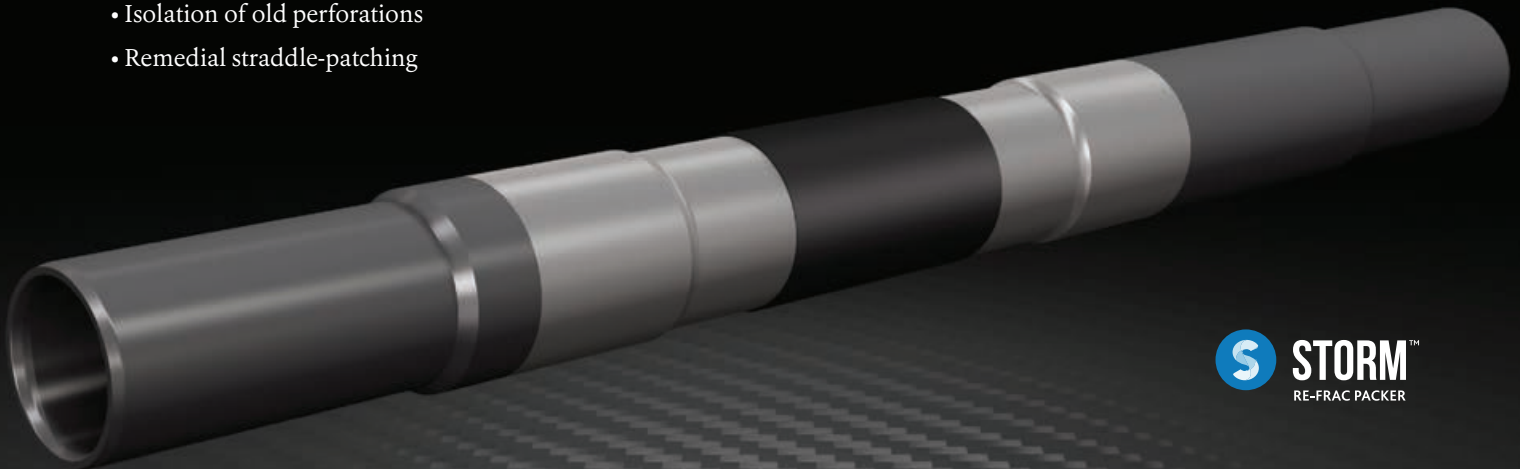
- Super Slim OD and Big Bore ID design matching conventional pipe
- Instant on-demand active metal seal
- Simple deployment using conventional equipment
- Simple, robust and reliable design with no moving parts and no leak paths
- Differential pressure ratings up to 10,000 psi

APPLICATIONS:

- Run in cased hole/energized with production tubing (or work string)
- Re-stimulation of multi-stage wells
- Isolation of old perforations
- Remedial straddle-patching

BENEFITS

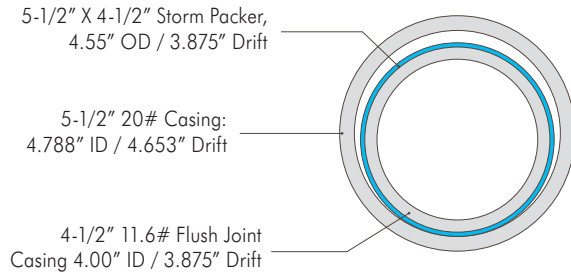
- Large ID allows for increased pumping rates
- Full re-stimulation control
- Minimal loss of ID matching standard liners
- Inert metallic sleeve impervious to wellbore fluids
- Flexible configuration/uses standard plug & guns and ball drop sleeve systems
- Cost-effective alternative to expensive expandable liners and unreliable chemical diverter solutions



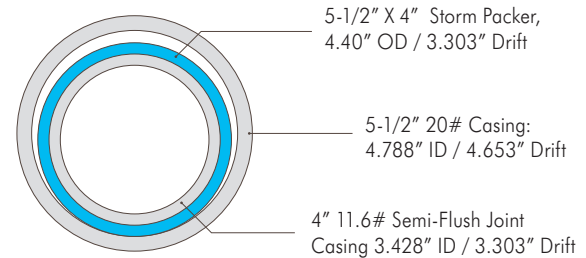
DIMENSIONS					
Casing Size	Casing Weight	Tubing Size	Packer OD	Packer Drift ID	Pressure Ratings
4.500"	9.5# - 13.5#	3.500"	3.650"	2.867"	10,000 psi
5.000"	13# - 18#	4.000"	4.100"	3.303"	
	21# - 24.2#	3.500"	3.750"	2.867"	
5.500"	13# - 20#	4.500"	4.550"	3.875"	
	23# - 26#	4.000"	4.400"	3.303"	

Other sizes and specifications are available

Cross-Section Drawing Showing 5-1/2" 20# Casing with the 5-1/2" x 4-1/2" Storm Packer System



Cross-Section Drawing Showing 5-1/2" 20# Casing with the 5-1/2" x 4" Storm Packer System





NINEENERGYSERVICE.COM