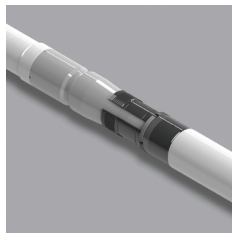


REFRAC LINER SYSTEMS

MAXIMIZE RETURNS WITH FIELD PROVEN TECHNOLOGY

Through the partnership with NewGen Systems Ltd., our suite of refrac liners has successfully restimulated over 200 existing wells across the US, renewing well profitability, reducing costs, and increasing ROI for operators. Scan the QR Code to learn more.



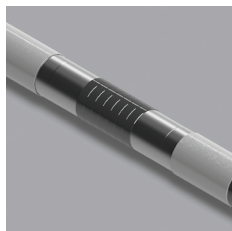
REGEN™ LINER HANGER

The REGEN™ Liner Hanger allows operators to deploy a conventional liner inside the existing well with a single drop in liner size, thereby allowing conventional plug and perf operations and maximum stimulation pump rates. This system eliminates the need for additional intervention or clean out trips.



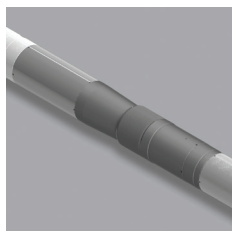
REGEN™ FULLBORE LINER TIEBACK SYSTEM

By proactively installing the REGEN™ Fullbore Liner Tieback System, operators can address isolation issues, ensure wellbore integrity, and minimize the risk of delays or cancellations during operations – while maintaining the capability to run full size frac plugs, and pump at pressures up to 12,000psi.



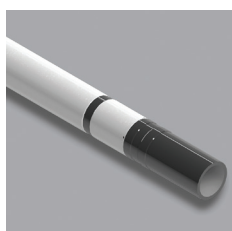
REGEN™ REFRAC PACKER

The REGEN™ Refrac Packer is an advanced slim hole HPHT packer that can be used with the REGEN™ Liner Hanger as a liner top packer, or as one of many packers in a multi-stage packer completion. Withstanding the most demanding pressure differentials, the packer can be installed in any location in the well.



REGEN™ FULLBORE LINER TOP PACKER

The REGEN™ Fullbore Liner Top Packer is an advanced slim hole HPHT packer that can remedy any leak between the 4" and 5 1/2" casing without the requirement of costly cement squeezes.



REGEN™ WET SHOE SUB

The REGEN™ Wet Shoe Sub (WSS) features an integrated landing profile for the cementing dart. Operators can carry out cement operations as normal, allowing perforating guns or subsequent intervention equipment to be pumped into the well.

FRAC PLUG TECHNOLOGY

READY. SET. REFRAC.



Nine understands complex wellbores and long laterals. From effective zonal isolation and quick millout times to no millout at all, we have your back with the latest composite and dissolvable frac plug technology. Scan the QR Code to learn more.



STINGER™ DISSOLVABLE FRAC PLUG

Among the market's shortest and most advanced dissolvable technology, Stinger™ Dissolvable Plugs can save operators up to four or more days per wellbore. It works consistently and predictably in any wellbore environment.



STINGER™ EXTENDED RANGE DISSOLVABLE FRAC PLUG

This plug vastly improves operational efficiency while dissolving predictably in wellbores with casing restrictions or patches. Its highly engineered design can achieve zonal isolation while significantly reducing millout risk.



MAGNUM VANISHING PLUG™ - HIGH TEMP

The Magnum Vanishing Plug (MVP) from Nine Energy Service is among the industry's most efficient dissolvable plugs. The MVP helps operators dramatically improve productivity by eliminating the need for well intervention.



SCORPION™ COMPOSITE FRAC PLUG

As wells deepen and laterals become longer, operators seek faster, more reliable frac plug solutions for zonal isolation, and Scorpion™ can reliably set, effectively isolate, and be milled out more than 50% faster than the competition.



SCORPION™ EXTENDED RANGE COMPOSITE FRAC PLUG

Nine designed the Scorpion™ Extended Range Composite Plug to get you out of tight situations when your casing fails or collapses. Through its wireline services, Nine offers modeling software that allows you to verify that successful pumpdown operations can occur.