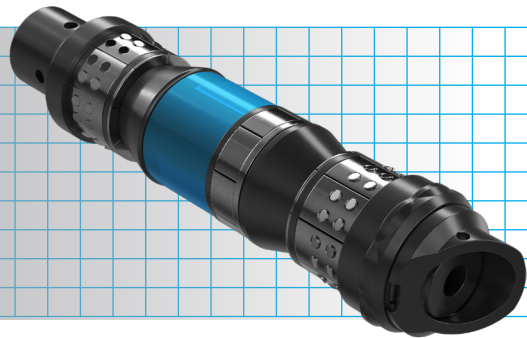


# THE FRAC PLUG (R)EVOLUTION



Explore the unique benefits offered by two distinct forces in frac plug technology – the Scorpion and Pincer. Both tools share the advantage of utilizing the same high-quality composite materials, maintaining reliability in their performance. However, the Pincer goes a step further by incorporating dissolvable material on specific components, enhancing millouts for added efficiency, versatility, and time savings.

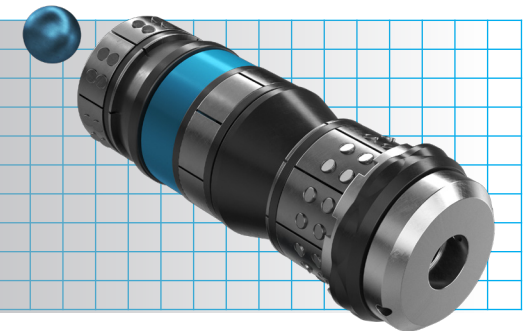
## THE SCORPION COMPOSITE FRAC PLUG



**OVERVIEW** Manufactured predominantly from advanced composite materials, Nine's Scorpion Composite Plug is significantly shorter than most plugs of its kind. This design allows for a faster millout process, surpassing its counterparts. Proven in the field, the Scorpion is a trusted solution for operators seeking reliable zonal isolation.

- + Scientifically molded construction for excellent quality
- + Single elastomer element, compression-energized
- + Segmented backup rings
- + Ceramic gripping buttons
- + Significant water savings with dissolvable pumpdown rings

## THE PINCER HYBRID FRAC PLUG



**OVERVIEW** Effectively pumpdown, set, and achieve zonal isolation for fracs. Engineered for optimal downhole efficiency, the Pincer Hybrid Plug stands as a considerable advancement in completion tool technology. This innovation significantly minimizes bit wear, enabling the milling of multiple plugs in a single trip for enhanced operational efficiency.

- + Effective wellbore zonal isolation
- + 47% less material than Scorpion frac plugs
- + Enhanced milling times
- + Segmented backup rings
- + Significant water savings with dissolvable pumpdown ring