



FILL THE GAP BETWEEN  
VALUE AND PERFORMANCE  
NINE/MORPHANCHOR  
PRODUCTION ANCHOR.

MORHPACKERS DELIVER REVOLUTIONARY AND HIGHLY INNOVATIVE EXPANDABLE STEEL PACKERS SPECIALIZING IN REFRAC PACKERS AND PRODUCTION PACKERS AND ANCHORS FOR THE GLOBAL OIL AND GAS SECTOR.

MorphAnchor™ is a hydraulic production anchor that offers a Slim high-clearance OD design and a Big Bore ID deployed on a drillpipe conveyed running tool.



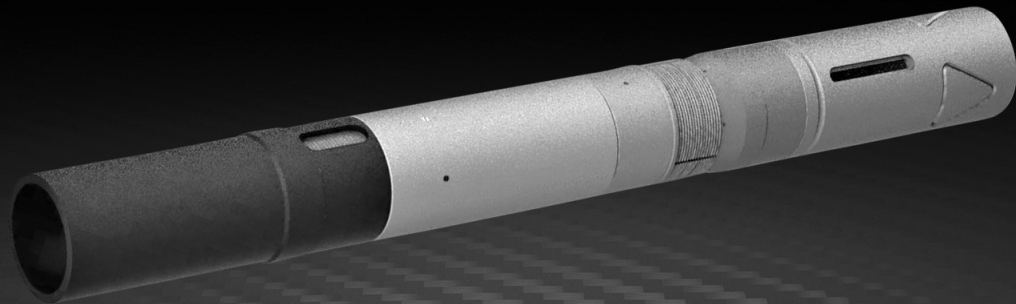
Expandable steel annular packers.



Reducing well construction costs. Optimizing production. Enhancing life of field.



Lowest price to performance ratio for refrac completion solutions.



FEATURES

- Big Bore ID design matching drift up to 4 ½” 12.6#
- Slim OD for high RIH clearance
- Short length
- Anti pre-set mechanism
- Easily millable
- Temperature rating 250oF

BENEFITS

- Allows use of standard plug and perf technology
- Big Bore – High pump rates
- Slim OD – Easy to deploy

APPLICATIONS

- Deploying cased hole completions
- Frac & Refrac tubing anchor

DIMENSIONS				
Casing Size	Casing Weight	Tubing Size	Anchor OD	Anchor Drift ID
5.500"	17#	43.5"	4.7"	2.867"

Other sizes and specifications are available







Nine

[NINEENERGYSERVICE.COM](http://NINEENERGYSERVICE.COM)