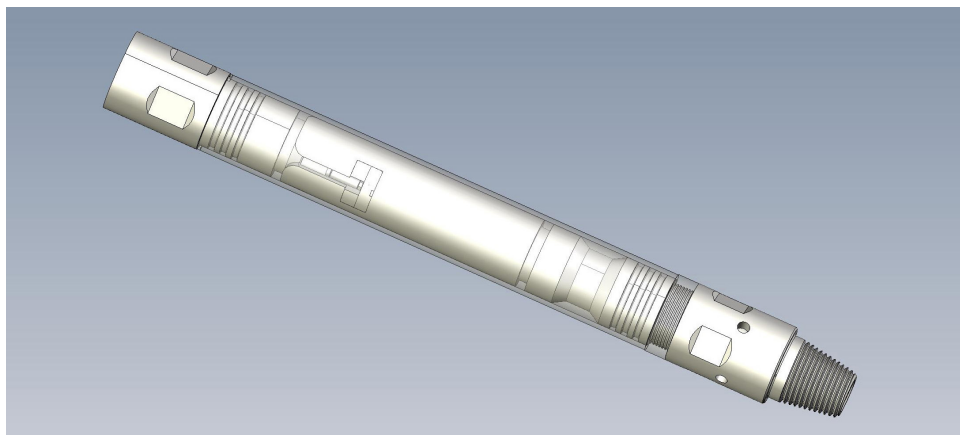
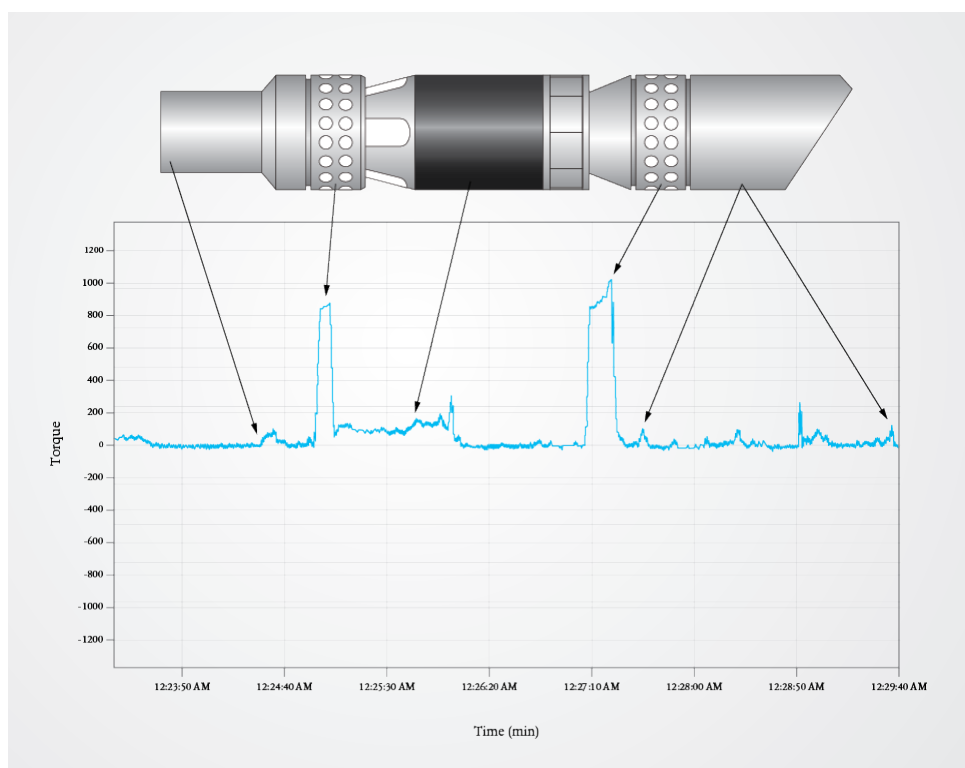


TRUSIGHT™ DOWNHOLE MEMORY TOOL LOGGING SERVICES



Nine Energy Service's TruSight Downhole Memory Tool Logging Services provides valuable insights into your downhole operations. The data is collected through our state of the art multi-sensor technology, which delivers accurate measurement values for Weight on Bit (WoB), Torque, Pressure, Temperature, and multi-axis G-Force sensing. Utilizing the latest data mapping software, we combine these downhole measurements with the surface data acquisition to form a complete picture of in-well operations.

Through our TruSight Downhole Memory Tool Logging Services, you receive validation of operating practices and valuable information that will help you to optimize future well interventions.



Measured torque "signature" while milling Nine Energy Scorpion frac plug at 19,250 ft in well depth

Applications

- Plug Milling
- Cleanouts
- Perforating
- Fishing
- Stimulation
- Fracturing
- Mechanical Manipulation

Conveyance

- Coiled Tubing
- Jointed Pipe
- Snubbing

Sensor Package

- Weight on Bit
- Torque
- Pressure
- Temperature
- Dual axis G-force
- Inclination (coming soon)
- Side Load (coming soon)

Features and Benefits

- Confirm and analyze downhole events
- Optimize plug and BHA selection
- Plan next work based on actual results
- Correlation of wellbore friction factors
- Assessment of wellbore cleanout efficiency
- Evaluation of actual versus predicted weight on bit
- Assess forces from extended reach tools
- Validation of PDM torque output
- Verification of downhole tool functions
- Identify thief zones
- Pressure & temperature gradients
- Productivity Index analysis
- Dog Leg severity vs pipe stresses

| Dimensions | | | |
|------------|--------|--------|--------|
| OD | 2.875" | 3.250" | 3.500" |
| ID | 1.000" | 1.250" | 1.750" |
| OAL | 29.5" | 29.5" | 29.5" |
| Box thread | PAC | PAC | Reg/IF |
| Pin Thread | PAC | PAC | Reg/IF |
| Elastomers | Viton | Viton | Viton |

| Operating Envelope | | | |
|--------------------|--------------|--------------|--------------|
| Pressure Rating | 15,000 psi | 15,000 psi | 15,000 psi |
| Temperature Rating | 350 F | 350 F | 350 F |
| Compression (lbs) | 60,000 lbs | 100,000 lbs | 120,000 lbs |
| Tensile (lbs) | 135,000 lbs | 145,000 lbs | 165,000 lbs |
| Torque (ft/lbs) | 2,650 ft/lbs | 3,500 ft/lbs | 4,000 ft/lbs |
| Material (110K) | 4330 HT | 4330 HT | 4330 HT |
| Operating Hours | 100-140 | 100-140 | 100-140 |

| Sensors | | |
|---------------|---------------|-----------------------|
| Weight on Bit | K-Foil | +/- 200LBS Accuracy |
| Torque | K-Foil | +/- 75LBS Accuracy |
| Pressure | Paine | 0.1psi Accuracy FS |
| Temperature | Paine | 1 degree 'F' Accuracy |
| G-Force | Accelerometer | +/- 0.5Gs Accuracy |

| Sensor Development | | |
|--------------------|---------------|-------------|
| Inclination | Accelerometer | Coming Soon |
| Side Load | K-Foil | Coming Soon |

*Specifications may change depending on size